



OVERTON OFFICE
615 N. Moapa Valley Blvd.
P.O. Box 395
Overton, NV 89040
Telephone: (702) 397-2512
Fax: (702) 397-2583

MESQUITE OFFICE
731 Turtleback Road
Mesquite, NV 89027
Telephone: (702) 346-5710
Fax: (702) 346-5880

OFFICE HOURS
Monday thru Friday
8:00 a.m. - 5:00 p.m.

Visit us online at
www.opd5.com

UPCOMING BOARD MEETINGS

October 16, 2019
3:00 p.m.
Mesquite Office
Engineering Building
Board Room

November 20, 2019
3:00 p.m.
Overton Office
Board Room

December 11, 2019
3:00 p.m.
Mesquite Office
Engineering Building
Board Room

Board meetings are subject to change. Please check our website, Facebook page or twitter feed a day prior to the meeting for a copy of the agenda.

OPD5 OBTAINS GRANTS FOR TWO CHARGING STATIONS

Nevada's Strategic Planning Framework 2016-2020 laid out a goal to "complete an "electric highway" system serving the entire state." The state is quickly moving towards that goal with electric vehicle recharging stations up and running in locations along I-80 and SR-95. New stations are also being added on other major highways throughout the state. OPD5 has received grants to support two charging stations along I-15; one in Mesquite and one in Glendale. While these may be OPD5's first charging station locations, as demands grows they will probably not be the last.

While electric vehicles (EVs) may seem futuristic, the idea of using electric energy to propel vehicles is not a new phenomenon. While history is uncertain who created the first EV, what is certain is that electric motors were in use as far back as the early 1800s. In 1828, inventor Anyos Jedlik created a small electric motor and mounted it in a model car that could move along a track. He was not alone. Sometime between 1832 and 1839, a larger electric motor created by Scottish inventor Robert Anderson was used to drive a carriage.

These EVs did not gain widespread use, but they did spark the imaginations of others. In 1835, two small-scale EVs were created; one in Holland, and one in the United States by Thomas Davenport. Davenport would later create the first electric car to run on batteries, although the batteries were non-rechargeable and were unable to give the car much range. Others, including French inventor Gaston Plante, worked on better batteries, but their efforts fell short of providing an adequate range for a practical vehicle.

Today, electric vehicles are more popular than they have ever been. New batteries allow them to travel longer distances, thus making them more practical for daily use. Each year, as technology continues to make strides, the use of EVs is expected to increase, and the easy access to charging stations will make their use feasible for all drivers, not just the ones who are willing to sacrifice convenience to "go green."

The two stations that OPD5 received grants to develop are located at the Eagles Landing in Mesquite and the AM/PM in Glendale. These locations were selected based on the state's requirement that stations be located within 5 miles of I-15, be open 24 hours a day, have public restrooms and amenities and other ownership and operational requirements. Work on the two locations is well underway, and they are expected to be fully functional by mid-October of 2019.



EV Charging station located at the AM/PM in Glendale, NV

Energy Conservation



Outdoor Christmas Lights Do's and Don'ts

By Keith Buchhalter OPD5 Public Affairs

The Holidays are just around the corner, and it's that time of the year to find those boxes where we store our decorations. Outdoor Christmas lights are my favorite, and I love seeing the creativity and dedication of many when it comes to decorating their home. Yes, we all have that neighbor that goes above and beyond. But let's be honest, it's a simple way to share the cheer and joy of the Holiday Season.

Sharing is caring, and that's why, in this edition, I want to share with you the do's and don'ts of outdoor Christmas lights.

DO'S

DO invest in supplies rated for outdoor use. It's important to select lights, extension cords, power strips and timers that are rated for outdoor use; so they can stand up to moisture, precipitation, and weather changes.

DO make sure you have backup when you're using a ladder. Even if it seems like an easy job, have someone on hand to steady the ladder and generally keep an eye out for your safety. Even seasoned professionals who work on ladders all the time use the buddy system.

DO invest in LED bulbs. They cost more upfront, but

you'll save money in the long run, as they last 12 times as long as traditional bulbs.

DO carefully check your electrical system. Inspect the outlets and plugs you'll be using. If there's sparking or heating up in the socket, call an electrician. If your lights have loose or bare wires, don't use them.

DON'TS

DON'T hang lights by yourself while home alone. Be sure to wear properly fitting clothing and gloves, so nothing gets caught or snagged.

DON'T use a staple gun to attach holiday lights, it is an action that will get you on the naughty list. Not only will staples damage your home, but you could also damage the lights. One staple misfire can ruin an entire strand of lights. So, the first rule for safe decorating: Put down the staple gun.

DON'T overdo the power. If your lights continually trip the circuit breaker or GFCI, you probably have too many lights up.

DON'T leave your lights on all hours of the night. Add a timer so you don't have to worry about burning energy at 5 a.m. This is a cost effective way to enjoy your lights without paying for power used when no one can enjoy them.

I hope you enjoy this article, and if you have a cool tip, share it with us at customerservice@opd5.com. For more energy savings and safety tips, like us on Facebook. From all of us at OPD5, may you and your loved ones have a safe Holiday Season.

ASK KATIE

How do I sign up for Auto-Pay? Is it free? To get started simply login to your account at www.opd5.com, under the *Payments* tab, select *Auto-Pay* and choose the option that is more convenient for you. Once automatic payments are set up, your credit card or bank account will be automatically charged for the amount of your bill each month on the due date. There's no fee for this service. You can also set up your account on Auto-Pay by calling or visiting your local OPD5 office.



Watts New

Rate Schedule

Effective September 1, 2019

Residential (Rate 1)

Monthly Base Charge	30.00
Energy Charge	
First 500 kWh	0.0672
Next 1500 kWh	0.0872
Over 2000 kWh	0.0980

Small General Service non-demand 1000 kWh or less per month (Rate 3)

Monthly Base Charge	21.50
Energy Charge	
0 – 1000 kWh	0.0870

Small General Service non-demand over 1000 kWh per month (Rate 4)

Monthly Base Charge	40.00
Energy Charge	
First 1000 kWh	0.0685
Next 1000 kWh	0.0799
Over 2000 kWh	0.0859

Irrigation (Rate 7)

Monthly Base Charge	21.50
Demand Charge All kW	7.47
Energy Charge All kWh	0.0690

Large General Service (Rate 8)

Monthly Base Charge	70.78
Demand Charge All kW	9.01
Energy Charge All kWh	0.0666

Municipal & Water District (Rate 10)

Monthly Base Charge	35.00
Demand Charge All kW	8.62
Energy Charge All kWh	0.0655



10th Annual FOOD DRIVE ONE MAKES A DIFFERENCE November 4 - November 22

Since 2010, OPD5 and the schools within our service territory have collected and donated thousands of non-perishable food items to our local food banks. This year we are joining forces once again. As we reach a new milestone organizing our 10th Annual Food Drive we ask you to: help us help someone in need.

Your donations will benefit:

Virgin Valley Community Food Bank and
Cappalappa Family Resource Center.



You could win a
\$50 GIFT CARD!

Sign up today for Auto-Pay from a debit/credit card, and your name will be entered in our monthly drawing, who knows, you may be the next winner! Auto-Pay, it's free, convenient, peace of mind, when your bill is paid on time, every time!

DAYLIGHT SAVING TIME REMINDER

Don't forget to fall
back on **November 3!**
Set your clocks back
by one hour.



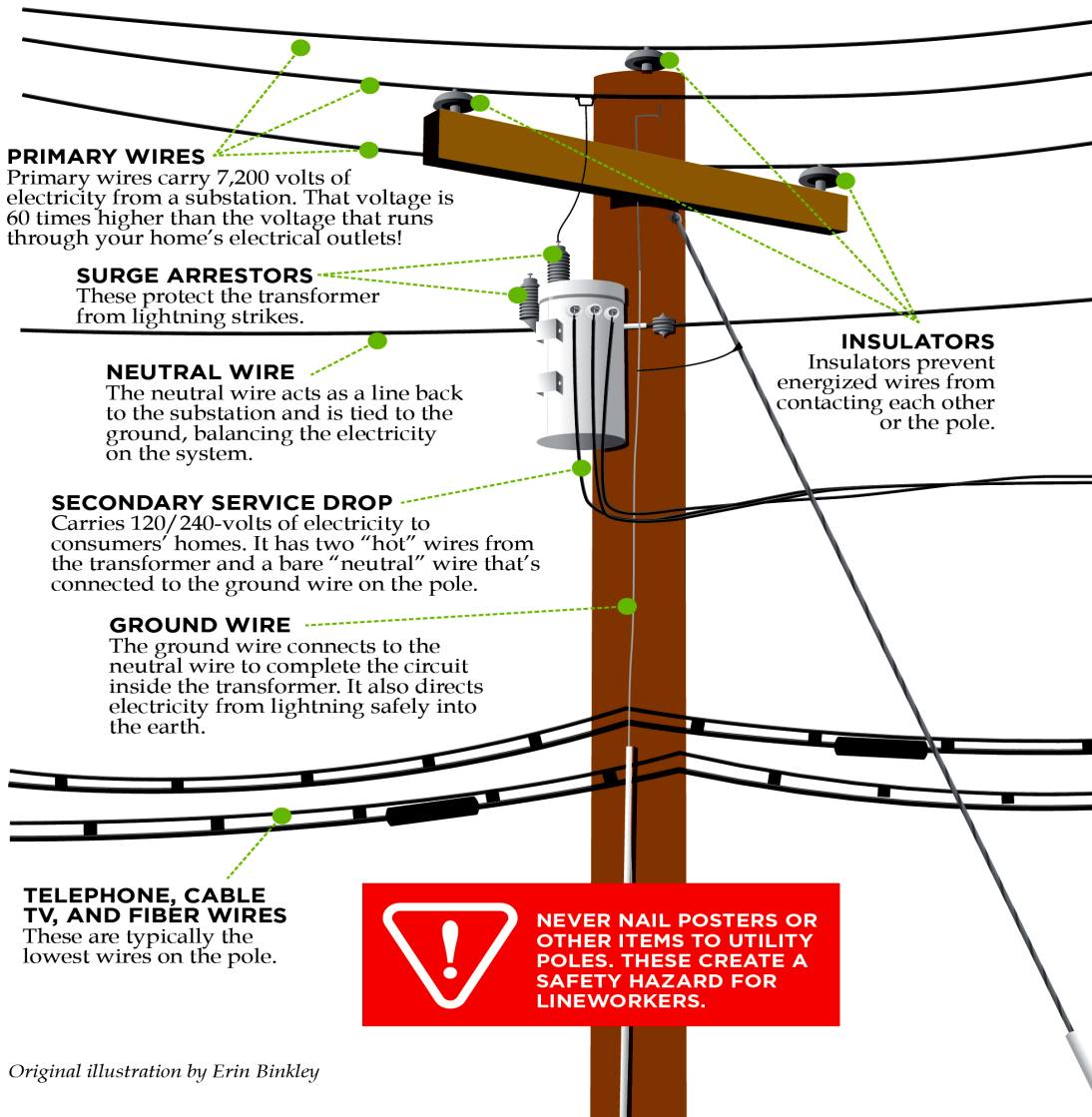
WATTS UP



Est. 1935

WHAT'S ON THAT POLE?

This illustration shows the basic equipment found on electric utility poles. The equipment varies according to the location and the service they provide.



PRIMARY WIRES

Primary wires carry 7,200 volts of electricity from a substation. That voltage is 60 times higher than the voltage that runs through your home's electrical outlets!

SURGE ARRESTORS

These protect the transformer from lightning strikes.

NEUTRAL WIRE

The neutral wire acts as a line back to the substation and is tied to the ground, balancing the electricity on the system.

SECONDARY SERVICE DROP

Carries 120/240-volts of electricity to consumers' homes. It has two "hot" wires from the transformer and a bare "neutral" wire that's connected to the ground wire on the pole.

GROUND WIRE

The ground wire connects to the neutral wire to complete the circuit inside the transformer. It also directs electricity from lightning safely into the earth.

INSULATORS

Insulators prevent energized wires from contacting each other or the pole.

TELEPHONE, CABLE TV, AND FIBER WIRES

These are typically the lowest wires on the pole.



NEVER NAIL POSTERS OR OTHER ITEMS TO UTILITY POLES. THESE CREATE A SAFETY HAZARD FOR LINeworkERS.

Original illustration by Erin Binkley

LIKE US ON
FACEBOOK, FOLLOW
US ON TWITTER AND
INSTAGRAM @OPD5

Our Facebook page and twitter feed are valuable resources to provide our customers with news and updates whenever an unplanned power outage occurs.

You can access both thru our website, they are setup in a way that does not require you to have a Facebook or twitter account to view the information.

We also post great tips on energy conservation, safety and emergency preparedness on Instagram.

Please remember, in the event of a power outage, do not report it via Facebook or twitter, we can't guarantee the delivery of messages received via social media to the right personnel in a timely manner.

In case of an unexpected power outage, please call us at (702) 397-2512 or (702) 346-5710. OPD5 has personnel on standby 24 hours a day, 7 days a week, 365 days a year, including weekends and holidays to respond as quickly as possible in the event of an emergency.

Our offices will be closed on :
Oct 25th Nevada Day - Nov 11th Veterans Day
Nov 28th Thanksgiving Day Nov 29th Family Day
Dec 25th Christmas Day
Regular office hours will resume the next business day
after the Holiday is observed.

Follow us on:

